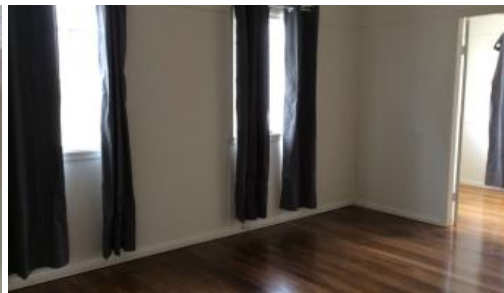
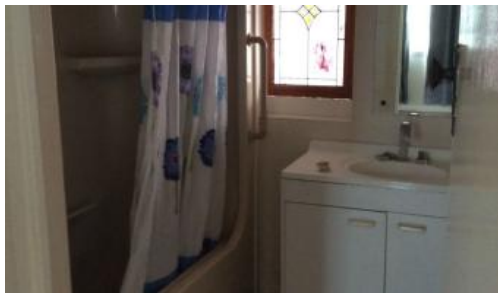




27 Blackall Street, East Ipswich



EAST IPSWICH

High set timber home, newly painted inside and out, with freshly polished floors throughout, large lounge, Two bedrooms with sleep out, fans in these rooms. Separate toilet, large lock up Garage in fully fenced yard, close to bus stop.

The above information provided has been furnished to us by the vendor/s. We have not verified whether or not that information is accurate and do not have any belief in one way or the other in its accuracy. We do not accept any responsibility to any person for its accuracy and do no more than pass it on. All interested parties should make and rely upon their own inquiries in order to determine whether or not this information is in fact accurate.

 2  1  1

Price	\$280.00
Property Type	Rental
Property ID	1030

Agent Details

Bronwyn Handley - 0421 926 276

Office Details

Ipswich
83 Brisbane Rd Newtown QLD 4305
Australia
07 3202 3877

