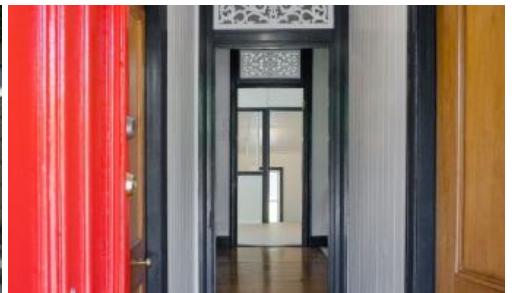




40 Warwick Road, Ipswich



IPSWICH

This large double story Queenslander has 2 levels of living. The upstairs level features 2 king size bedrooms with wardrobes and fans, 1 bedroom having air conditioning as well. Through to a large air conditioned lounge room with polished floors, ceiling fan and a decorative fireplace. The bathroom comes complete with large floor bath, separate shower, toilet and double vanity. The dining room is off the kitchen and catches the afternoon breezes. The kitchen has plenty of cupboard space and a dishwasher. Head down the stairs and you have a second large living area with floorcoverings and decorative fireplace, second bathroom and laundry combined, plus a further 2 king sized bedrooms with ceiling fans and robes. This area is fully secured with security screens and doors. A lovely verandah out the front is perfect for a morning cuppa and to watch the world go by. A tidy backyard incorporates a double carport, lockable storage area and grassed area for the kids to play. The property is private from the street, walking distance to Ipswich Medical precinct, CBD, university and public transport. The property will not disappoint. Sorry, no dogs

The above information provided has been furnished to us by the vendor/s. We have not verified whether or not that information is accurate and do not have any belief in one way or the other in its accuracy. We do not accept any responsibility to any person for its accuracy and do no more than pass it on. All interested parties should make and rely upon their own inquiries in order to determine whether or not this information is in fact accurate.

🛏 4 📶 2 🚗 2

Price

\$400 per week - Central Ipswich

Property Type

Rental

Property ID

1362

Agent Details

Bronwyn Handley - 0421 926 276

Office Details

Newtown

83 Brisbane Rd Newtown QLD 4305

Australia

07 3202 3877

