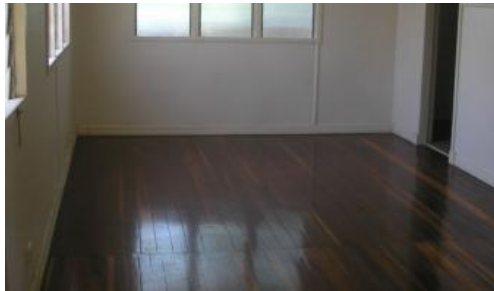




5 Pine Mountain Road, North Ipswich



NORTH IPSWICH

- Low set timber
- 3 bedrooms with built ins
- Open plan kitchen and dining
- Large lounge, internal laundry, bathroom, shower only
- Rear fenced yard
- Covered front patio
- Double carport
- Walk to shops, schools and on bus Route

The above information provided has been furnished to us by the vendor/s. We have not verified whether or not that information is accurate and do not have any belief in one way or the other in its accuracy. We do not accept any responsibility to any person for its accuracy and do no more than pass it on. All interested parties should make and rely upon their own inquiries in order to determine whether or not this information is in fact accurate.

3 1 2

Price \$260 Per week
Property Type Rental
Property ID 174

Agent Details

Bronwyn Handley - 0421 926 276

Office Details

Ipswich
83 Brisbane Rd Newtown QLD 4305
Australia
07 3202 3877

