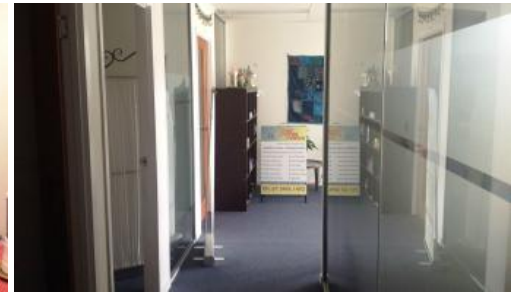
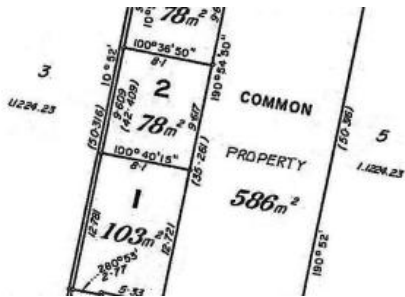




North Ipswich



Price reduction on North Ipswich Office Space

- 103*m2 Fully air-conditioned space
- Individual Offices, Staff room, reception area
- Onsite car-parking
- Exclusive facilities
- Location is great
- Walking distance to Riverlink precinct

These small and affordable offices are very neat and well presented. Situated in a busy North Ipswich precinct the offices are set back from the road so are not affected by any passing traffic noise. Past uses have been a Natural Therapies centre, massage and consulting rooms. It's an easy to find location with excellent neighbouring tenants, the premises have 2 car parks included plus there is ample unmetered on-street parking. Worth a look if you're after small and affordable office space.

- \$15,000 + GST + Outgoings (\$3,300)
- \$19,800 Gross per annum
- \$1,650 Gross per month
- \$381 Gross per week.

The above information provided has been furnished to us by the vendor/s. We have not verified whether or not that information is accurate and do not have any belief in one way or the other in its accuracy. We do not accept any responsibility to any person for its accuracy and do no more than pass it on. All interested parties should make and rely upon their own inquiries in order to determine whether or not this information is in fact accurate.



Price \$15,000 + GST + Outgoings
Property Type Commercial
Property ID 854
Floor Area 103 m2

Agent Details
 Bronwyn Handley - 0421 926 276

Office Details
 Ipswich
 83 Brisbane Rd Newtown QLD 4305
 Australia
 07 3202 3877

